



Park of the Palms, Inc

Visitation Policy and Procedure

Visitation Policy & Procedure

Adoption Date: 4/26/2022. Review 12/2023.

Policy

It is our policy to ensure safe visitation to our residents consistent with the resident “Bill of Rights” F.S. 429.28. In addition to educating employees and visitors of residents on procedures related to infection control.

Procedures

1. We will ensure that in person visitation will be allowed in all the following circumstances unless the resident objects:
 1. End-of-life situations.
 2. A resident who was living with family before being admitted to the Facility is struggling with the change in environment and lack of in-person family support.
 3. The resident is making one or more major medical decisions.
 4. A resident is experiencing emotional distress or grieving the loss of a friend or family member who recently died.
 5. A resident needs cueing or encouragement to eat or drink which was previously provided by a family member or a caregiver.
 6. A resident who used to talk and interact with others is seldom speaking.
2. Residents may also designate a visitor who is a family member, friend, guardian, or other individual as an essential caregiver. The essential caregiver is allowed to have in-person visitation for at least 2 hours daily in addition to any other visitation authorized by the Facility but does not have to provide necessary care.
3. Residents shall have unrestricted private communication, including receiving and sending unopened correspondence, access to a telephone, and visiting with any person of his/her choice at any time between the hours of 9am and 9pm at a minimum. Upon request the

facility shall make provisions to extend visiting hours for caregivers and out of town guests, and in other similar situation.

4. The Facility will not require visitors to provide proof of vaccination or immunization.
5. All visitors must sign in/out at the front desk. Park of the Palms, Inc will screen the visitor per the facility's infection control policy and procedure. Staff will document the name of the individual, the date, and time of entry. Visitors who have a positive viral test for COVID-19, symptoms of COVID-19 or currently meet the criteria for quarantine should not enter.
6. The Administrator or designee is designated as the person responsible for ensuring that employees adhere to the visitation policies and procedures.
7. A staff member is designated to support infection control and prevention by providing our infection control policy, CDC recommendations on stopping the spread of germs, how to use hand sanitizer and the proper use of PPE to all visitors. These packets will also be made available to all incoming residents/family.
8. Consensual physical contact between patients and their loved ones will not be restricted.
9. Visits are done throughout the building.
10. Children must be supervised by an adult at all times.
11. All visitors will be asked to agree in writing to follow this policy.
12. The administrator or designee may suspend in-person visitation of a specific visitor in case of violation of the provider's policy and procedures on visitation.



Park of the Palms, Inc

INFECTION CONTROL POLICY AND PROCEDURE

GENERAL PROCEDURES FOR VISITORS

Policy: Good infection control is designed to provide a safe, sanitary and comfortable environment for our residents and to help prevent the development and transmission of disease and infection. Every effort will be made to keep our residents living in a safe and healthy environment.

Procedure:

- If visitors are showing any signs of illness they will not be allowed to enter the building
- Visitors and staff will sign in at the front desk. A copy of the Park of the Palms Infection Control policy and educational packet is available at the front desk. This will include: CDC recommendations on stopping the spread of germs, how to use hand sanitizer and the proper use of PPE.
- Good hand hygiene can reduce the risk of spreading disease and infection. Hands need to be sanitized upon entry into our facility and before going into a resident's room. Frequent hand sanitizing and washing should be done often while in the facility
- Social distancing helps reduce the risk of spreading disease and infection.
- In the event of an outbreak of a communicable disease all staff and visitors will need to wear PPE (according to CDC guidelines) until the outbreak has passed
- Masks will be made available during an outbreak for all staff and visitors
- In the event of an outbreak of a communicable disease all visitors will need to be screened which may include a temperature and/or a questionnaire about health status.
- Regular cleaning and sanitizing help prevent the spread of illness. Common areas, hallways and frequently touched surfaces are regularly cleaned throughout each shift

Revised 12.23

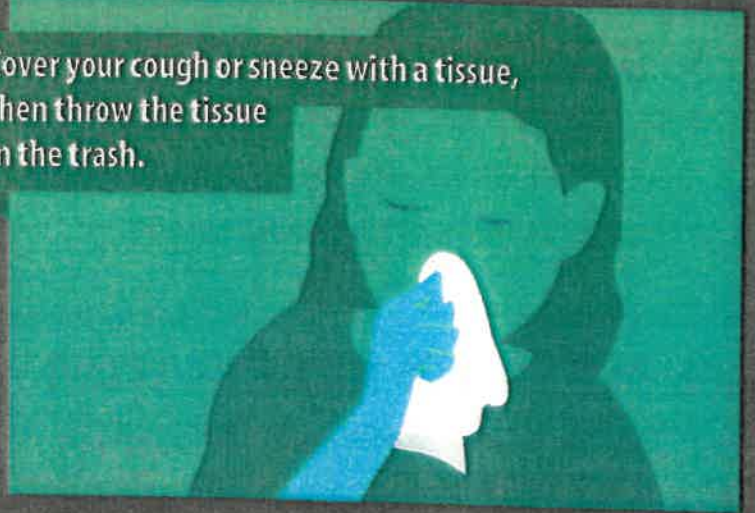
STOP THE SPREAD OF GERMS

Help prevent the spread of respiratory diseases like COVID-19.

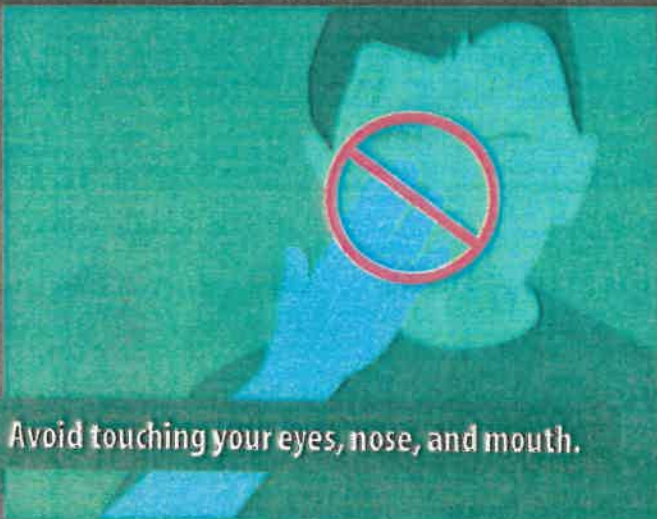
Avoid close contact with people who are sick.



Cover your cough or sneeze with a tissue, then throw the tissue in the trash.



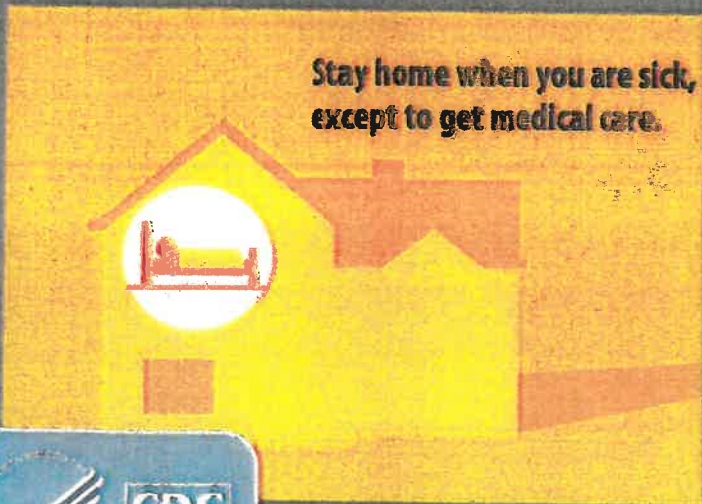
Avoid touching your eyes, nose, and mouth.



Clean and disinfect frequently touched objects and surfaces.



Stay home when you are sick, except to get medical care.



Wash your hands often with soap and water for at least 20 seconds.



[cdc.gov/COVID19](https://www.cdc.gov/COVID19)

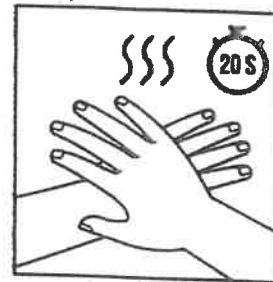
HOW TO USE HAND SANITIZER



APPLY THE PRODUCT ON
THE PALM OF ONE HAND



RUB HANDS TOGETHER



COVER ALL SURFACES
UNTIL HANDS FEEL DRY
(20 SEC)

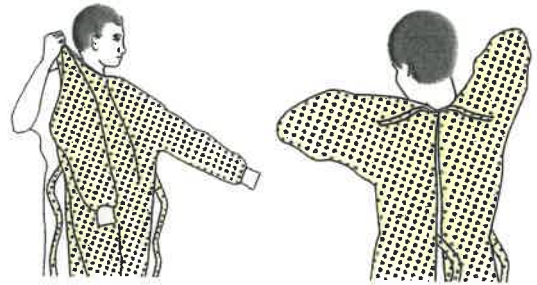
- 1) Apply hand sanitizer prior to entering the facility. (Instructions above)
- 2) Apply surgical mask properly.
- 3) Staff will take and record your temperature.
- 4) PPE instructions and Infection Control practices must be read, then Consent forms must be signed.
- 5) Consent will be kept on-file for future visitation.
- 6) Staff will instruct visitor which location to enter the building for visitation to occur.
- 7) Visitation is limited to residents' room and no wandering in the halls or conversing with other residents.
- 8) Please re-sanitize gloves entering and exiting your loved-one's room.
- 9) Do not remove your PPE until you have exited the building. (Please schedule your next visit 24hrs in advance.)

SEQUENCE FOR PUTTING ON PERSONAL PROTECTIVE EQUIPMENT (PPE)

The type of PPE used will vary based on the level of precautions required, such as standard and contact, droplet or airborne infection isolation precautions. The procedure for putting on and removing PPE should be tailored to the specific type of PPE.

1. GOWN

- Fully cover torso from neck to knees, arms to end of wrists, and wrap around the back
- Fasten in back of neck and waist



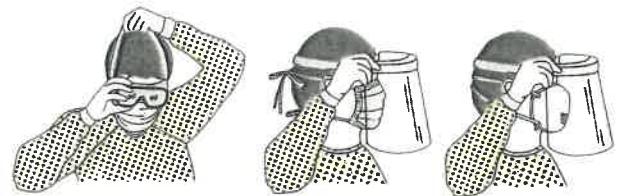
2. MASK OR RESPIRATOR

- Secure ties or elastic bands at middle of head and neck
- Fit flexible band to nose bridge
- Fit snug to face and below chin
- Fit-check respirator



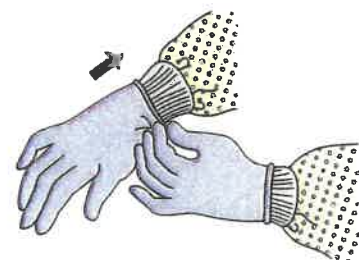
3. GOGGLES OR FACE SHIELD

- Place over face and eyes and adjust to fit



4. GLOVES

- Extend to cover wrist of isolation gown



USE SAFE WORK PRACTICES TO PROTECT YOURSELF AND LIMIT THE SPREAD OF CONTAMINATION

- Keep hands away from face
- Limit surfaces touched
- Change gloves when torn or heavily contaminated
- Perform hand hygiene



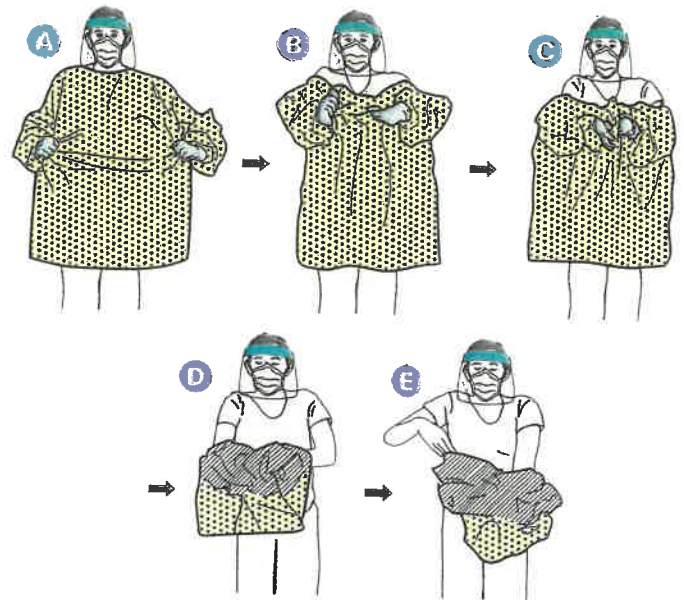
HOW TO SAFELY REMOVE PERSONAL PROTECTIVE EQUIPMENT (PPE)

EXAMPLE 2

Here is another way to safely remove PPE without contaminating your clothing, skin, or mucous membranes with potentially infectious materials. **Remove all PPE before exiting the patient room** except a respirator, if worn. Remove the respirator **after** leaving the patient room and closing the door. Remove PPE in the following sequence:

1. GOWN AND GLOVES

- Gown front and sleeves and the outside of gloves are contaminated!
- If your hands get contaminated during gown or glove removal, immediately wash your hands or use an alcohol-based hand sanitizer
- Grasp the gown in the front and pull away from your body so that the ties break, touching outside of gown only with gloved hands
- While removing the gown, fold or roll the gown inside-out into a bundle
- As you are removing the gown, peel off your gloves at the same time, only touching the inside of the gloves and gown with your bare hands. Place the gown and gloves into a waste container



2. GOGGLES OR FACE SHIELD

- Outside of goggles or face shield are contaminated!
- If your hands get contaminated during goggle or face shield removal, immediately wash your hands or use an alcohol-based hand sanitizer
- Remove goggles or face shield from the back by lifting head band and without touching the front of the goggles or face shield
- If the item is reusable, place in designated receptacle for reprocessing. Otherwise, discard in a waste container

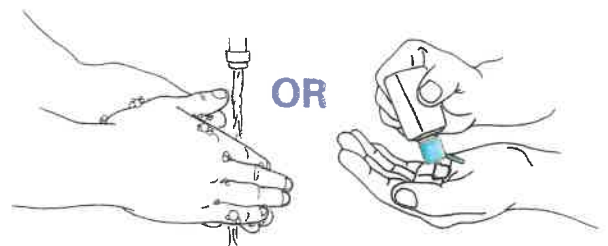


3. MASK OR RESPIRATOR

- Front of mask/respirator is contaminated — DO NOT TOUCH!
- If your hands get contaminated during mask/respirator removal, immediately wash your hands or use an alcohol-based hand sanitizer
- Grasp bottom ties or elastics of the mask/respirator, then the ones at the top, and remove without touching the front
- Discard in a waste container



4. WASH HANDS OR USE AN ALCOHOL-BASED HAND SANITIZER IMMEDIATELY AFTER REMOVING ALL PPE



PERFORM HAND HYGIENE BETWEEN STEPS IF HANDS BECOME CONTAMINATED AND IMMEDIATELY AFTER REMOVING ALL PPE

